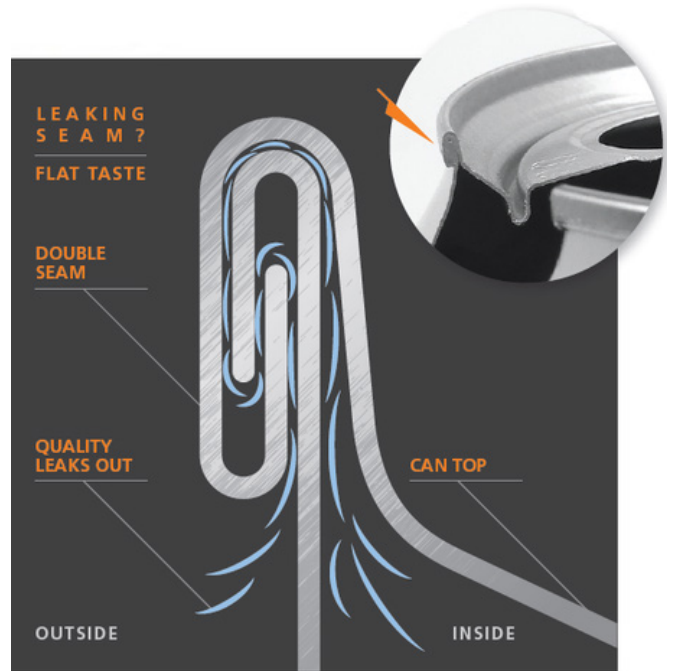


When Air Leaks In, Quality Leaks Out.

Can seams are made to keep air out, however things can go wrong during the seaming process. A bad seam can look perfectly normal and still allow air to leak in and your beverage to leak out, compromising quality.

Can seams should be inspected on a regular basis to ensure your canning equipment is creating air-tight seams.

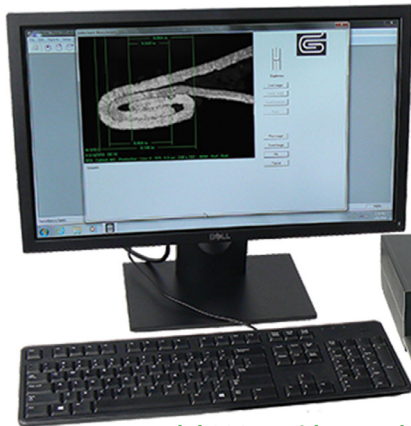
OneVision Corporation is a leading supplier of can seam inspection and measurement systems.



SeamMate® System bundles that meet your brewery's specific needs and budget.

All-In-One SeamMate® System

Windows 10 64-bit PC & Monitor



Model 330AT Video Module
Thickness Gauge &
Microscope with Camera



Mini Seam Stripper

Model 555 Seam Saw

Countersink Gauge

Most Popular Bundle

All SeamMate® System bundles* include installation, training, and email & phone support from the OneVision team.

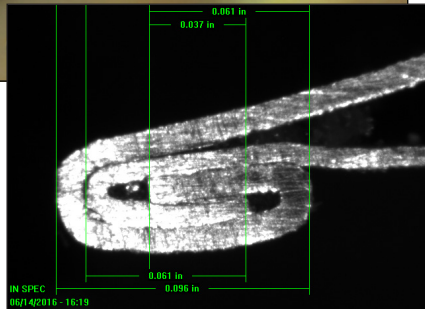
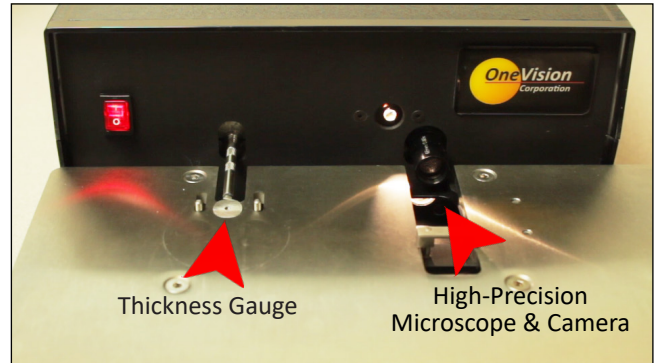


Scan for Demo

*More information on SeamMate® System bundle options available upon request.

Model 330AT Video Module

Used to visually inspect the double seam, the Model 330AT Video Module is the heart of the OneVision SeamMate® System. Driven by our proprietary software, the SeamMate® System empowers you to quickly measure, store, and analyze inspection data.



Patented Technology

Automatic Double Seam Tightness

During the inspection process, SeamMate® software automatically calculates seam tightness by analyzing the geometry of captured seam images.

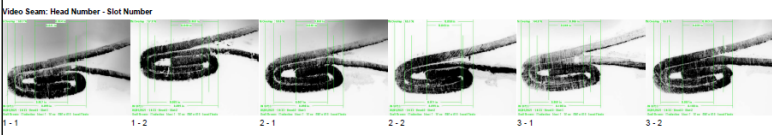
Sample Date: 08/01/2021 Pull Time: 14:33

| USL | LWL | LSL | Countersink | Thickness | THRNNG | Bodyhook | Coverhook | Overlap | OL% | HT | TGT | ATGT | | | | | | | | |
|-------|------------------|-------------|-------------|-----------|----------|-----------|-----------|---------|-------|-------|-------|-------|-------|-------|------|-------|-------|-------|-----|----|
| 0.280 | 0.046 | 0.003 | 0.075 | 0.068 | 0.000 | 0.059 | 90.0 | 0.101 | 100 | 100 | 100 | 100 | | | | | | | | |
| 0.264 | 0.040 | 0.000 | 0.055 | 0.053 | 0.030 | 50.0 | 0.095 | 90 | 80 | | | | | | | | | | | |
| Head | Visual Defects | Countersink | Thickness | THRNNG | Bodyhook | Coverhook | Overlap | OL% | HT | TGT | ATGT | | | | | | | | | |
| 01 | Surface Abrasion | 0.264 | 0.264 | 0.045 | 0.046 | 0.045 | 0.001 | 0.067 | 0.069 | 0.064 | 0.060 | 0.041 | 0.040 | 60.7 | 57.9 | 0.090 | 0.090 | 95 | 100 | |
| 02 | None | 0.271 | 0.270 | 0.270 | 0.044 | 0.047 | 0.046 | 0.003 | 0.067 | 0.071 | 0.060 | 0.058 | 0.040 | 0.043 | 59.0 | 65.1 | 0.098 | 0.090 | 95 | 90 |
| 03 | None | 0.263 | 0.262 | 0.263 | 0.048 | 0.046 | 0.045 | 0.003 | 0.068 | 0.067 | 0.066 | 0.063 | 0.044 | 0.039 | 64.8 | 58.8 | 0.100 | 0.100 | 100 | 95 |
| 04 | None | 0.270 | 0.269 | 0.270 | 0.047 | 0.046 | 0.047 | 0.001 | 0.068 | 0.069 | 0.068 | 0.067 | 0.037 | 0.038 | 55.6 | 58.7 | 0.090 | 0.090 | 95 | 90 |

| USL | LWL | LSL | Comments |
|-----|------|-----|----------|
| 01 | DM-A | | |
| 02 | DM-B | | |
| 03 | ICA | | |
| 04 | IV-B | | |

Inspected by: _____

Video Seam: Head Number - Slot Number



Sample Inspection Report



I like the ability to view trend lines, and the OneVision customer support has been excellent.

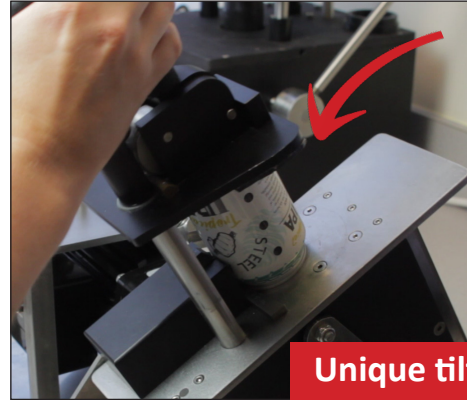
- Fat Head's Brewery



Scan for Video

Model 555 Manual Saw

Designed for slotting aluminum cans, the Model 555 Manual Saw produces fast, clean cuts ensuring double seam measurement accuracy. One of OneVision's most durable products, the saw is low-maintenance with easy-to-change saw blades.



Unique tilt table design for fast cutting cycle.



Tab bender opens slot for viewing.



Fast, clean cuts
save your team time.

“

The system is super simple to use...very intuitive...
Ever since we got the system in place, we have total
confidence in our seams.

- Great Notion Brewing



Scan for Video

Mini Seam Stripper

Removing the cover hook by hand is difficult, time-consuming, and dangerous. The Mini Seam Stripper easily and safely removes the cover hook for tightness inspection and precise micrometer measurements.

Compact
Design



Includes rugged stripper head
customized to fit your cans.



Easily strip complete seams
or slotted cans.



- Safe start/stop cutting cycle
- Quick can positioning
- Durable drive system for low maintenance